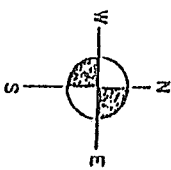


- COUNTY LINE
- CORPORATE LIMITS
- STATE TRUNKLINE
- COUNTY PRIMARY
- COUNTY LOCAL
- ADJACENT COUNTY
- CITY OR VILLAGE STREET

PRIMARY ROAD SYSTEM 12.33 MI.
 LOCAL ROAD SYSTEM 43.81 MI.

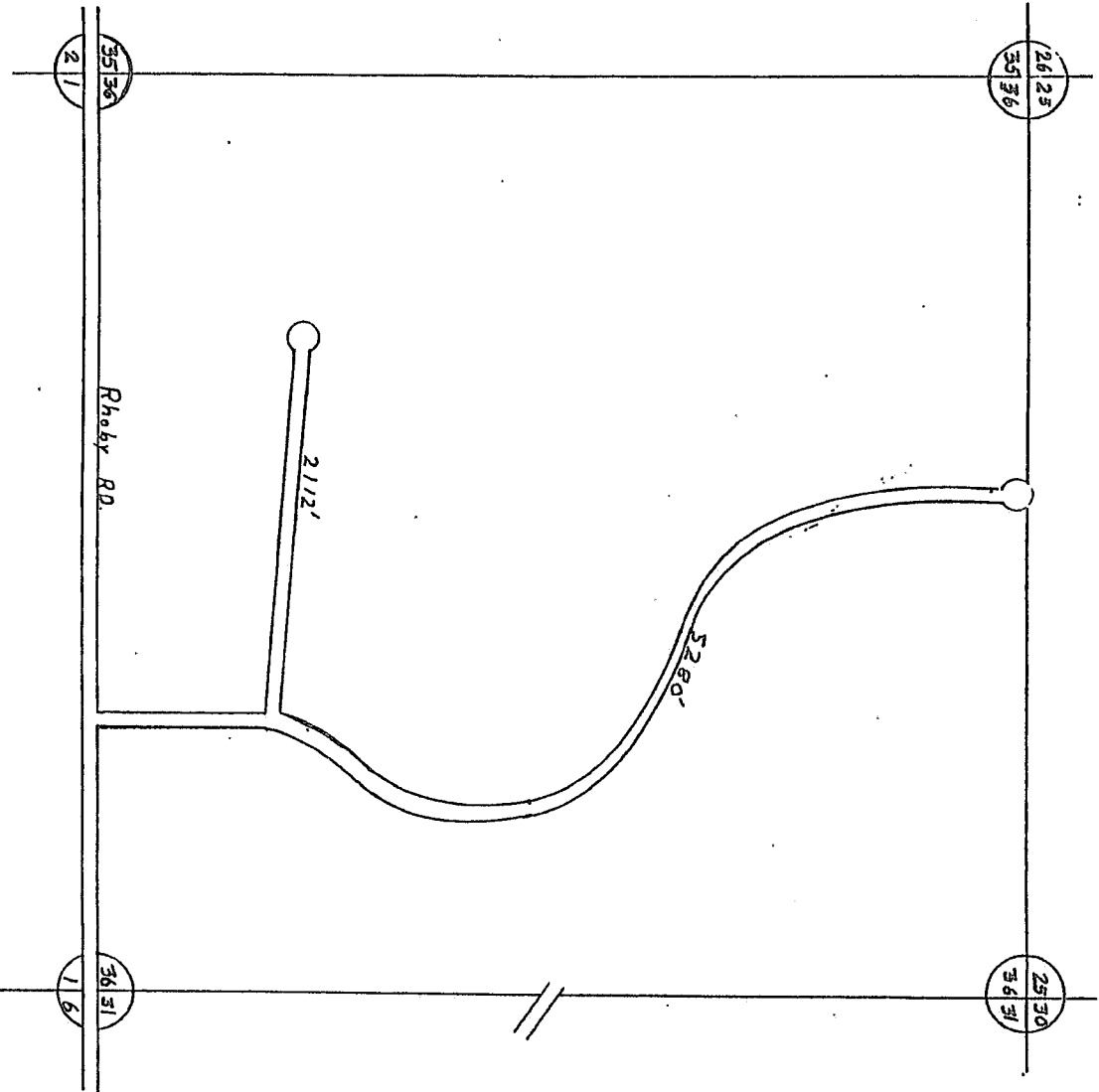
I HEREBY CERTIFY THAT THE ROADS SHOWN HEREON BY SYMBOL AS PRIMARY ROADS AND LOCAL ROADS ARE IN USE AND ARE UNDER THE JURISDICTION OF THE COUNTY ROAD COMMISSION.



SCALE 0 1/2 1 MILE
 ONE INCH EQUALS 3000 FT.

PIONEER TWP.
 T24N-R7W
 MISSAUKEE COUNTY

13	14	15	16
9	10	11	12
5	6	7	8
1	2	3	4



Trents Subdivision

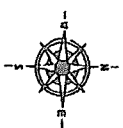
LEGEND

COUNTY LINE
 CORPORATE LIMITS
 STATE TRUNKLINE
 COUNTY PRIMARY
 COUNTY LOCAL
 ADJUTANT COUNTY
 CITY OR VILLAGE
 STREET

TOTAL PERMITS 7392 EQUALS 4.42 MILES

I HEREBY CERTIFY THAT THE ROADS SHOWN HEREOF BY SYMBOL, OR IN GREEN AS LOCAL ROADS ARE IN USE AND ARE UNDER THE JURISDICTION OF THE COUNTY ROAD COMMISSION.

CHAIRMAN _____ DATE _____



SCALE 0 400 1200 FEET
 One inch equals 600 feet

TOWNSHIP PIONEER
 SECTION 36 T. 24N. R. 7W
 COUNTY MISSOURI