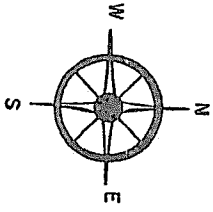


COUNTY LINE
 CORPORATE LIMITS
 STATE TRUNKLINE
 COUNTY PRIMARY
 COUNTY LOCAL
 ADJACENT COUNTY
 CITY OR VILLAGE
 STREET

PRIMARY ROAD SYSTEM IS 12.09 MI.
 LOCAL ROAD SYSTEM IS 46.85 MI.

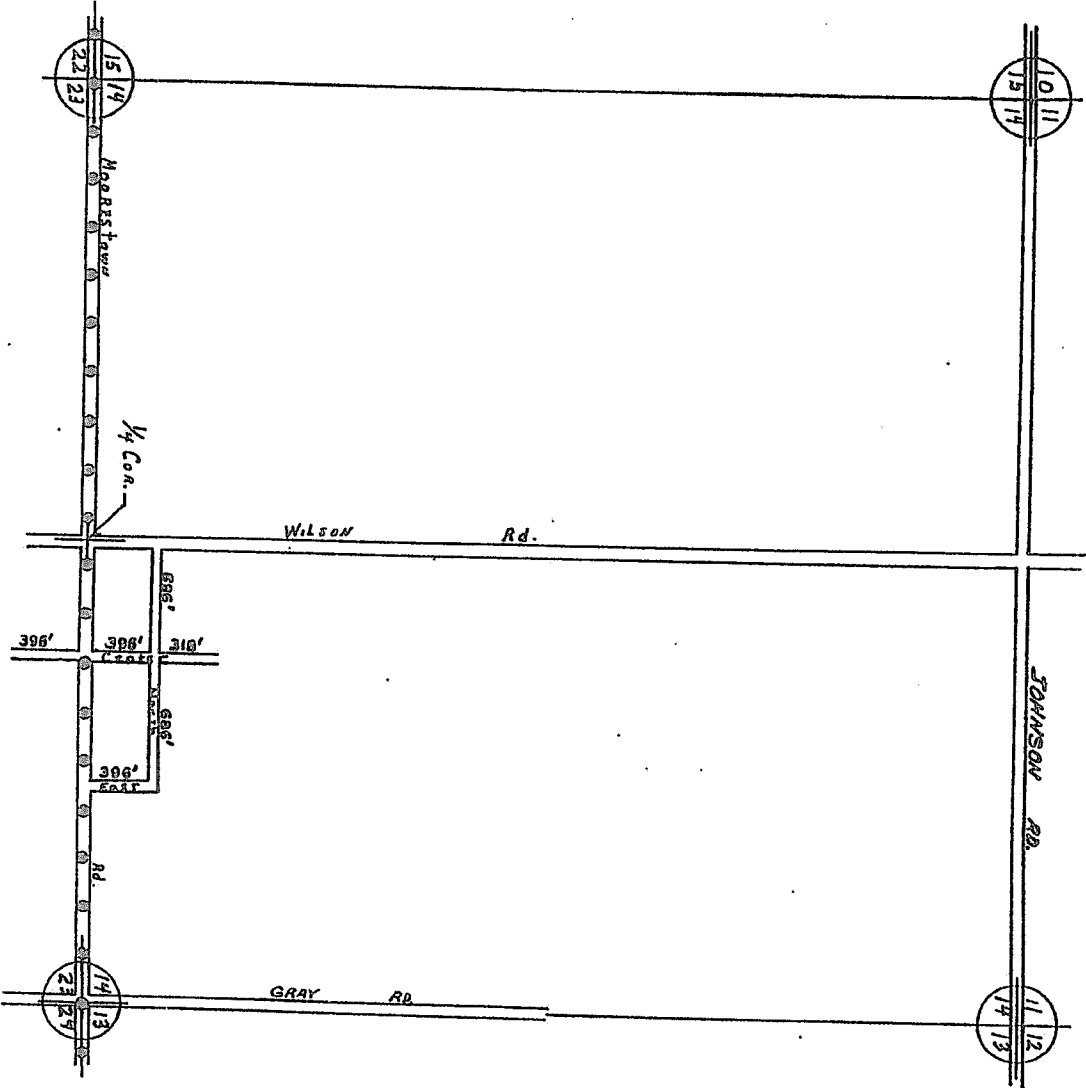
I HEREBY CERTIFY THAT THE
 ROADS SHOWN HEREON BY SYMBOL
 AS PRIMARY AND LOCAL ROADS ARE
 IN USE AND ARE UNDER THE JURIS-
 DICTION OF THE COUNTY ROAD COMM.

CHAIRMAN: _____ DATE _____



NORWICH TWP - WEST
 T24N - R6W
 MISSAUKEE COUNTY

13	14	15	16
9	10	11	12
5	6	7	8
1	2	3	4



Moorestown

Wilson Rd.

JOHNSON RD.

GRAY RD.

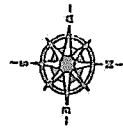
LEGEND

- COUNTY LINE
- COMPANATE LIGHTS
- STATE TURNPLANK
- COUNTY PRERARY
- COUNTY LOCAL
- ADJACENT COUNTY
- STY OR VILLAGE
- STREBY

TOTAL FEET 2872 EQUAL 53.45 ACRES

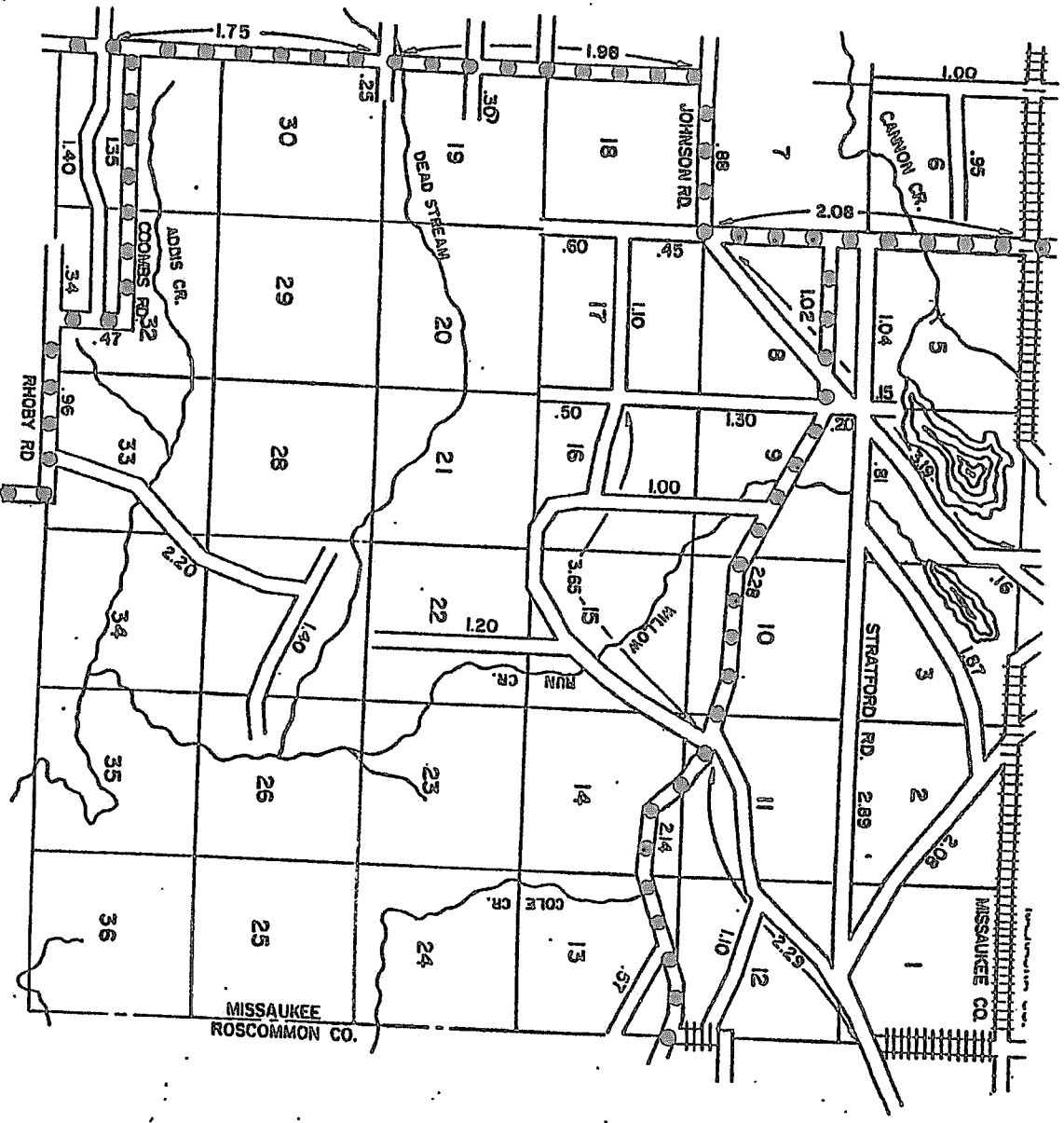
I HEREBY CERTIFY THAT THE ROAD SHOWN HEREIN BY SYMBOL OR BY OTHER AS LOCAL ROADS ARE IN USE AND ARE UNDER THE JURISDICTION OF THE COUNTY ROAD COMMISSION.

CHIEF CLERK DATE



SCALE 0 400 1200 FEET
One inch equals 400 feet

TOWNSHIP MORRIS
SECTION 14-23 T. 24 N. R. 1 W.
COUNTY MISSESSIPPI



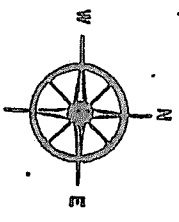
NORWICH TWP EAST

- COUNTY LINE
- CORPORATE LIMITS
- STATE TRUNKLINE
- COUNTY PRIMARY
- COUNTY LOCAL
- ADJACENT COUNTY
- CITY OR VILLAGE STREET

PRIMARY ROAD SYSTEM 14.91 MI.
 LOCAL ROAD SYSTEM - 33.99 MI.

I HEREBY CERTIFY THAT THE ROADS SHOWN HEREON BY SYMBOL AS PRIMARY ROADS AND THOSE SHOWN HEREON BY SYMBOL AS LOCAL ROADS ARE IN USE AND ARE UNDER THE JURISDICTION OF THE COUNTY ROAD COMMISSION.

CHAIRMAN _____ DATE _____



SCALE 0 1/2 1 MILE
 ONE INCH EQUALS 3000'
 NORWICH TWP EAST
 T24N - R5W
 MISSAUKEE CO.

13	14	15	16
9	10	11	12
5	6	7	8
1	2	3	4