

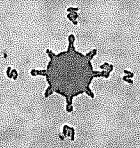
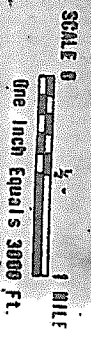
LEGEND

- COUNTY LINE
- CORPORATE LIMITS
- STATE TRUNKLINE
- COUNTY PRIMARY
- COUNTY LOCAL
- ADJACENT COUNTY
- CITY OR VILLAGE STREET

PRIMARY ROAD SYSTEM IS 18.17 MILES
 LOCAL ROAD SYSTEM IS 29.88 MILES

I HEREBY CERTIFY THAT THE ROADS SHOWN HEREIN BY SYMBOL OR IN RED AS PRIMARY ROADS AND THOSE SHOWN HEREIN BY SYMBOL OR IN GREEN AS LOCAL ROADS ARE IN USE AND ARE UNDER THE JURISDICTION OF THE COUNTY ROAD COMMISSION.

CHAIRMAN _____ DATE _____

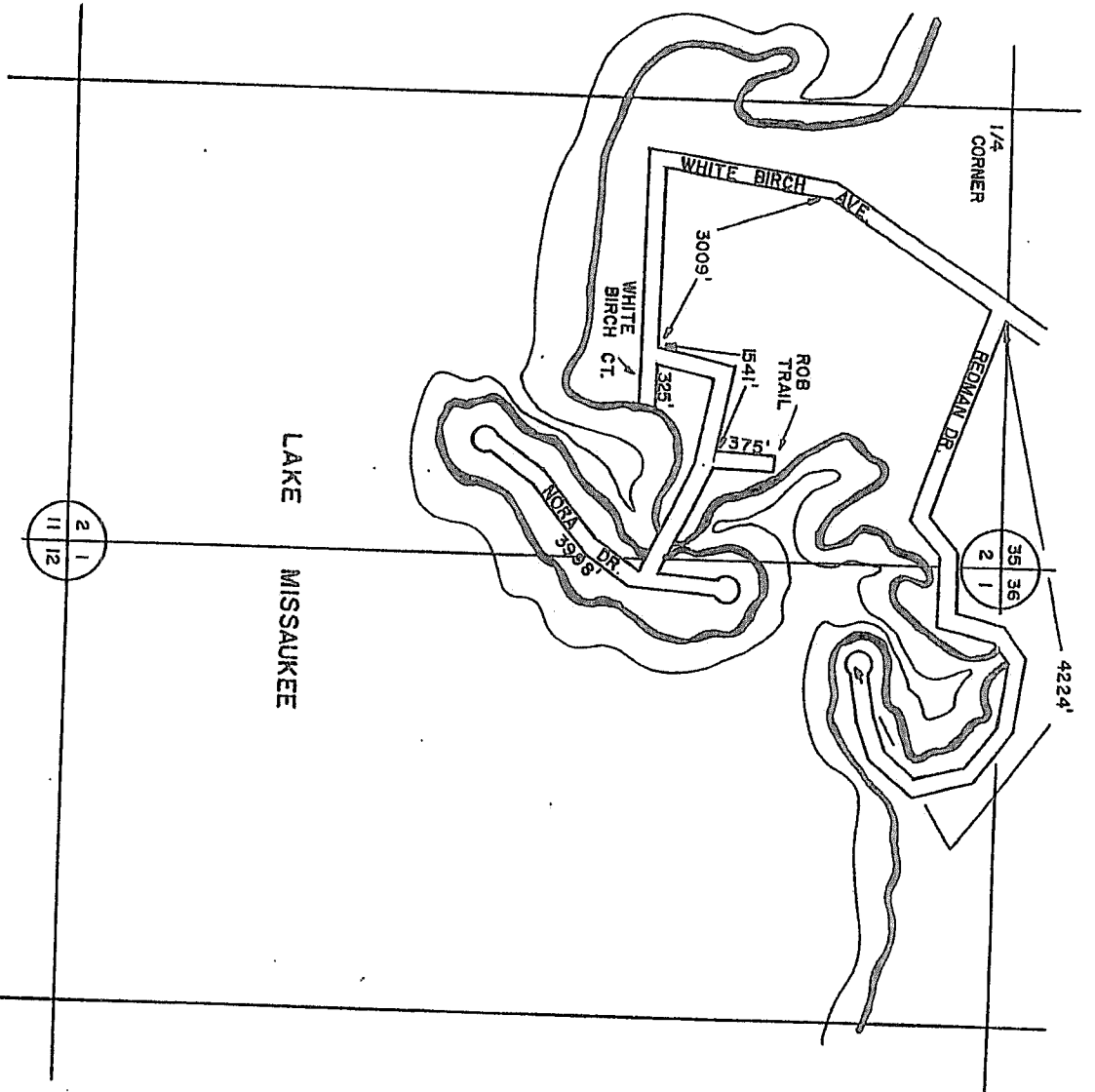


Prepared by

LAKE TWP.
 T 22 N - R 8 W
 MISSAUKEE CO.

13	14	15	16
9	10	11	12
6	7	8	
1	2	3	4

CLAYTON'S HARBOR, REDMANS ISLE

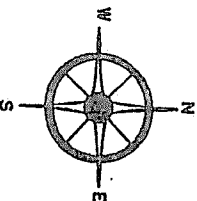


- COUNTY LINE
- - - CORPORATE LIMITS
- ==== STATE TRUNKLINE
- ==== COUNTY PRIMARY
- ==== COUNTY LOCAL
- ==== ADJACENT COUNTY
- ==== CITY OR VILLAGE
- ==== STREET

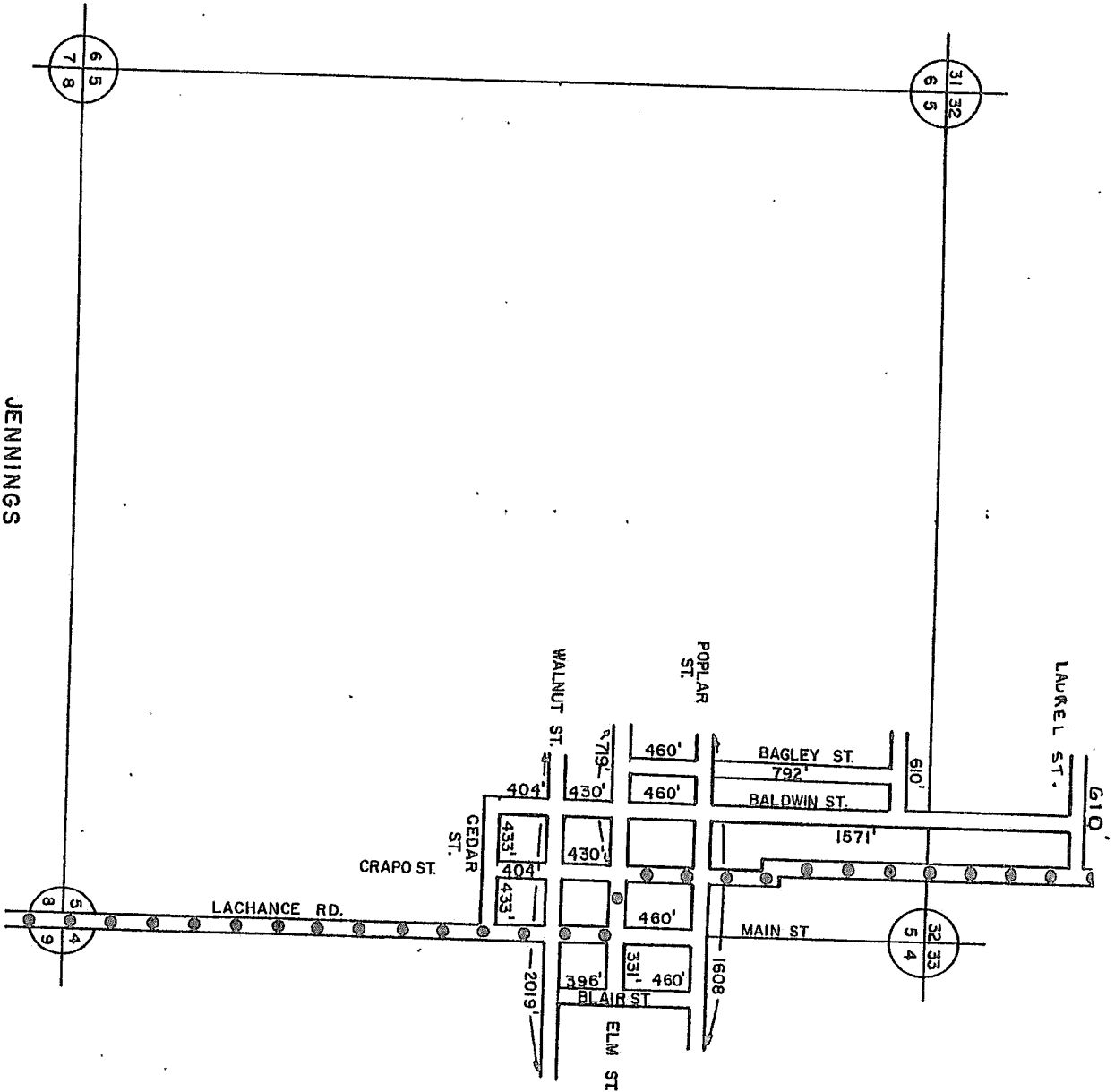
TOTAL FEET 13422 EQUALS 2.54 MI

I HEREBY CERTIFY THAT THE ROADS SHOWN HEREON BY SYMBOL OR IN GREEN AS LOCAL ROADS ARE IN USE AND ARE UNDER THE JURISDICTION OF THE COUNTY ROAD COMM.

CHAIRMAN _____ DATE _____



TOWNSHIP LAKE
 SECTION 1&2 T22N R8W
 COUNTY MISSAUKEE

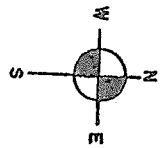


LEGEND

- COUNTY LINE
- CORPORATE LIMITS
- STATE TRUNKLINE
- ===== COUNTY PRIMARY
- ===== COUNTY LOCAL
- ===== ADJACENT COUNTY
- ===== CITY OR VILLAGE
- ===== STREET.

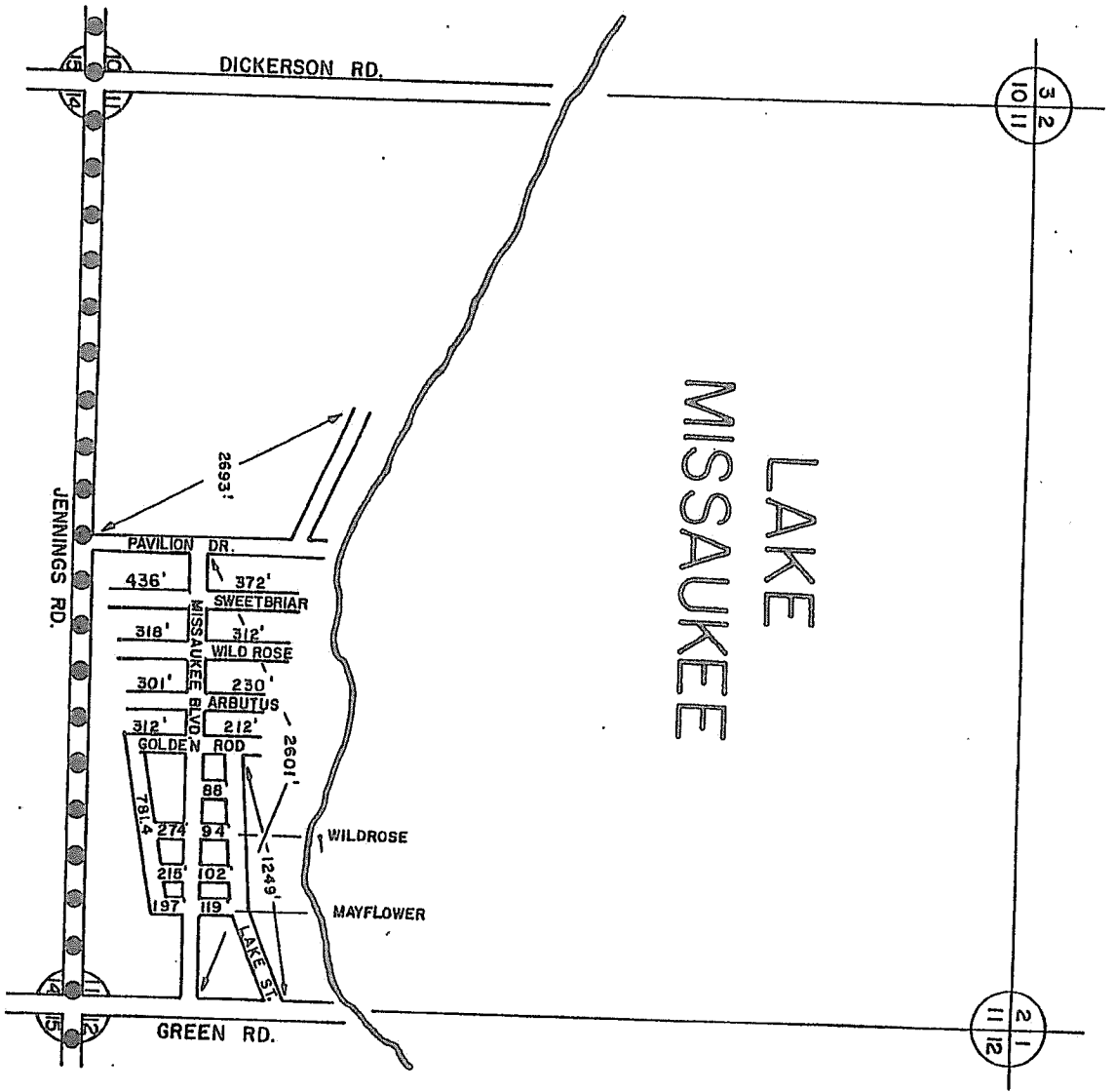
TOTAL FT. 13030 EQUALS 2.47 MI.

I HEREBY CERTIFY THAT THE ROADS SHOWN HEREON BY SYMBOL ARE IN USE AND ARE UNDER THE JURISDICTION OF THE COUNTY ROAD COMMISSION.



TOWNSHIP LAKE
 SECTION 5 T. 22N. R. 8W.
 COUNTY MISSAUKEE

JENNINGS



LAKE MISSAUKEE

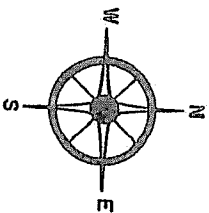
MISSAUKEE PARK

COUNTY LINE
CORPORATE LIMITS
STATE TRUNKLINE
COUNTY PRIMARY
COUNTY LOCAL
ADJACENT COUNTY
CITY OR VILLAGE
STREET

TOTAL FEET 109064 EQUALS 2.07 MILES

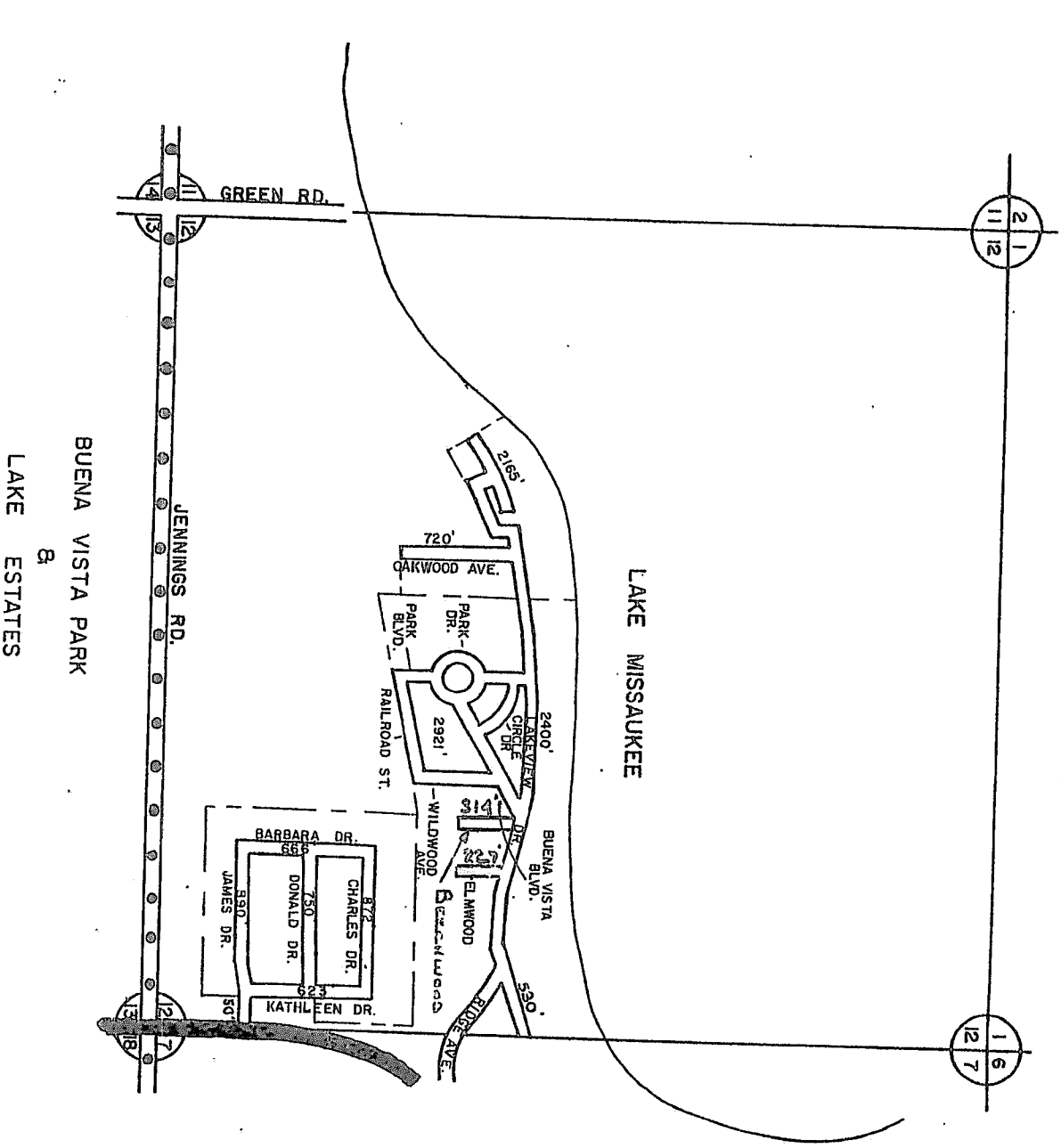
I HEREBY CERTIFY THAT THE ROADS SHOWN HEREON BY SYMBOL OR IN GREEN AS LOCAL ROADS ARE IN USE AND ARE UNDER THE JURISDICTION OF THE COUNTY ROAD COMMISSION.

CHAIRMAN _____ DATE _____



SCALE 0 1200 FEET
ONE INCH EQUALS 600 FT.

TOWNSHIP LAKE
SECTION 11 T. 22N. R. 8W.
COUNTY MISSAUKEE



21
11 12

16
12 7

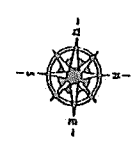
LEGEND

COUNTY LINE
 CORPORATE LIMITS
 STATE TOWNSHIP
 COUNTY PRIMARY
 COUNTY LOCAL
 ADJACENT COUNTY
 CITY OR VILLAGE
 STREET

TOTAL FEET 3128 249

I HEREBY CERTIFY THAT THE ROADS SHOWN HEREON BY SYMBOL OR IN GREEN AS LOCAL ROADS ARE IN USE AND ARE UNDER THE JURISDICTION OF THE COUNTY ROAD COMMISSION.

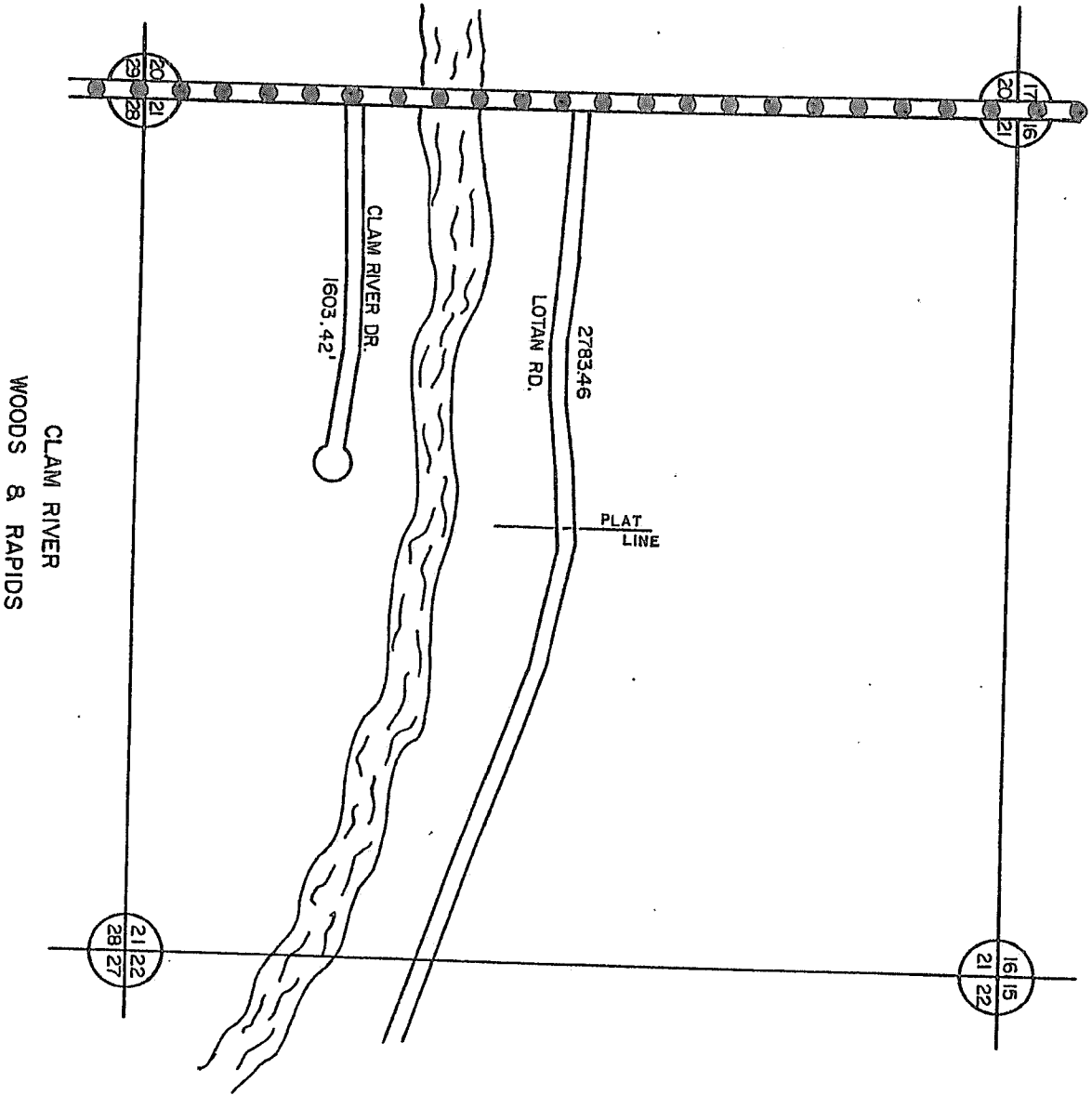
CHAIRMAN DATE



SCALE 0 400 1200 FEET
 One Inch equals 600 Feet

TOWNSHIP LAKE
 SECTION 12 T. 22N. R. 8W
 COUNTY MISSAUKEE

5D



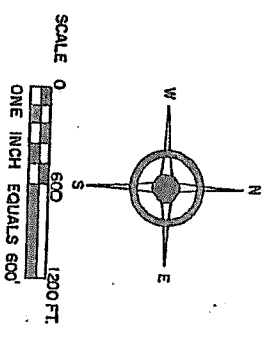
CLAM RIVER
WOODS & RAPIDS

- COUNTY LINE
- CORPORATE LIMITS
- STATE TRUNKLINE
- COUNTY PRIMARY
- COUNTY LOCAL
- ADJACENT COUNTY
- CITY OR VILLAGE
- STREET.

TOTAL FEET 4396.88 EQUALS .83 MI.

I HEREBY CERTIFY THAT THE ROADS SHOWN HEREON BY SYMBOL AS LOCAL ROADS ARE IN USE AND ARE UNDER THE JURISDICTION OF THE COUNTY ROAD COMMISSION.

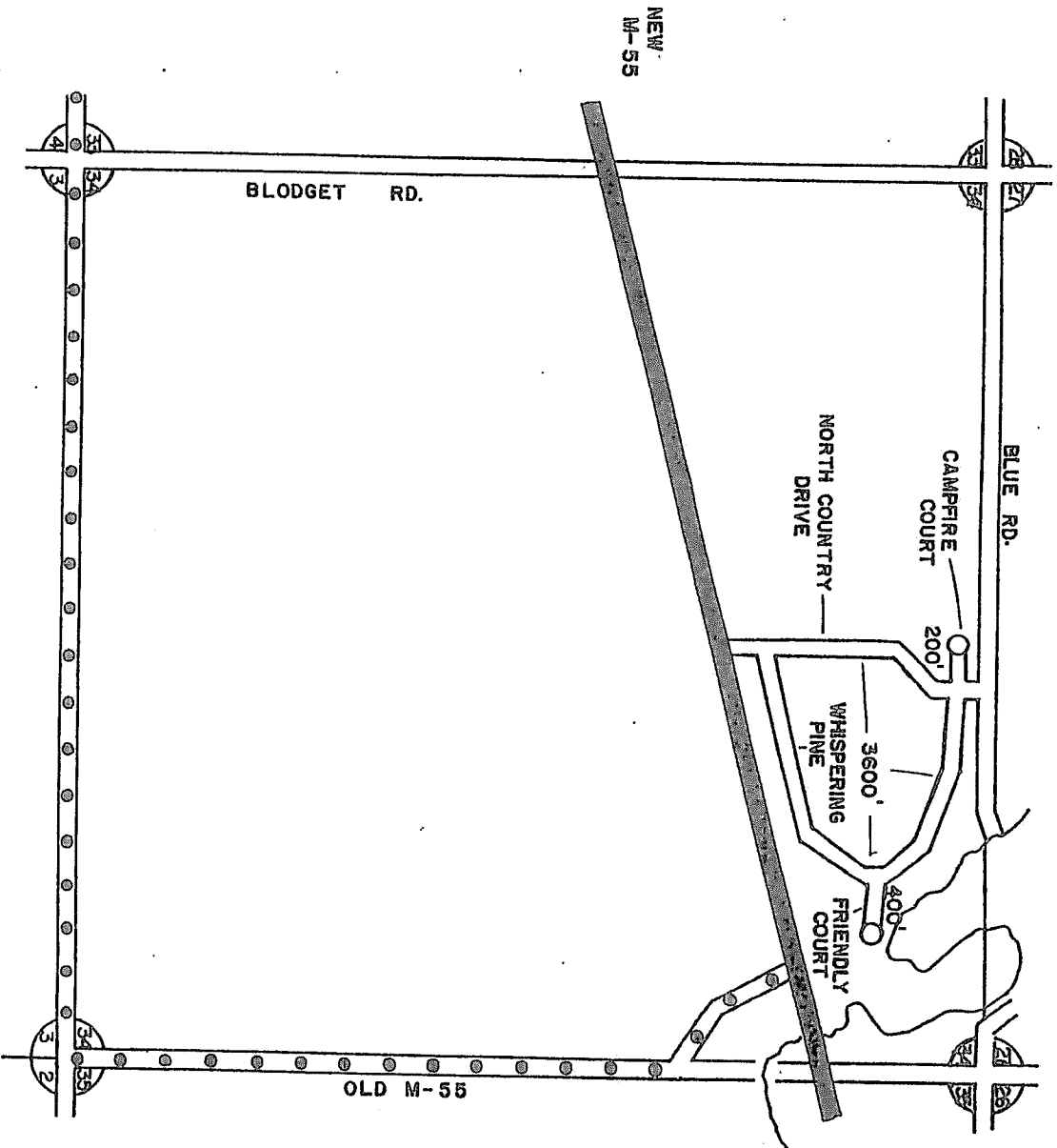
CHAIRMAN _____ DATE _____



TOWNSHIP _____ LAKE _____
SECTION 21 T22N R8W
COUNTY MISSAUKIE

SE

NORTH COUNTRY SUBDIVISION

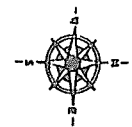


LEGEND

COUNTY LINE
 CORPORATE LIMITS
 STATE TOWNSHIP
 COUNTY PRIMARY
 COUNTY LOCAL
 ADJACENT COUNTY
 CITY OR VILLAGES
 STREET

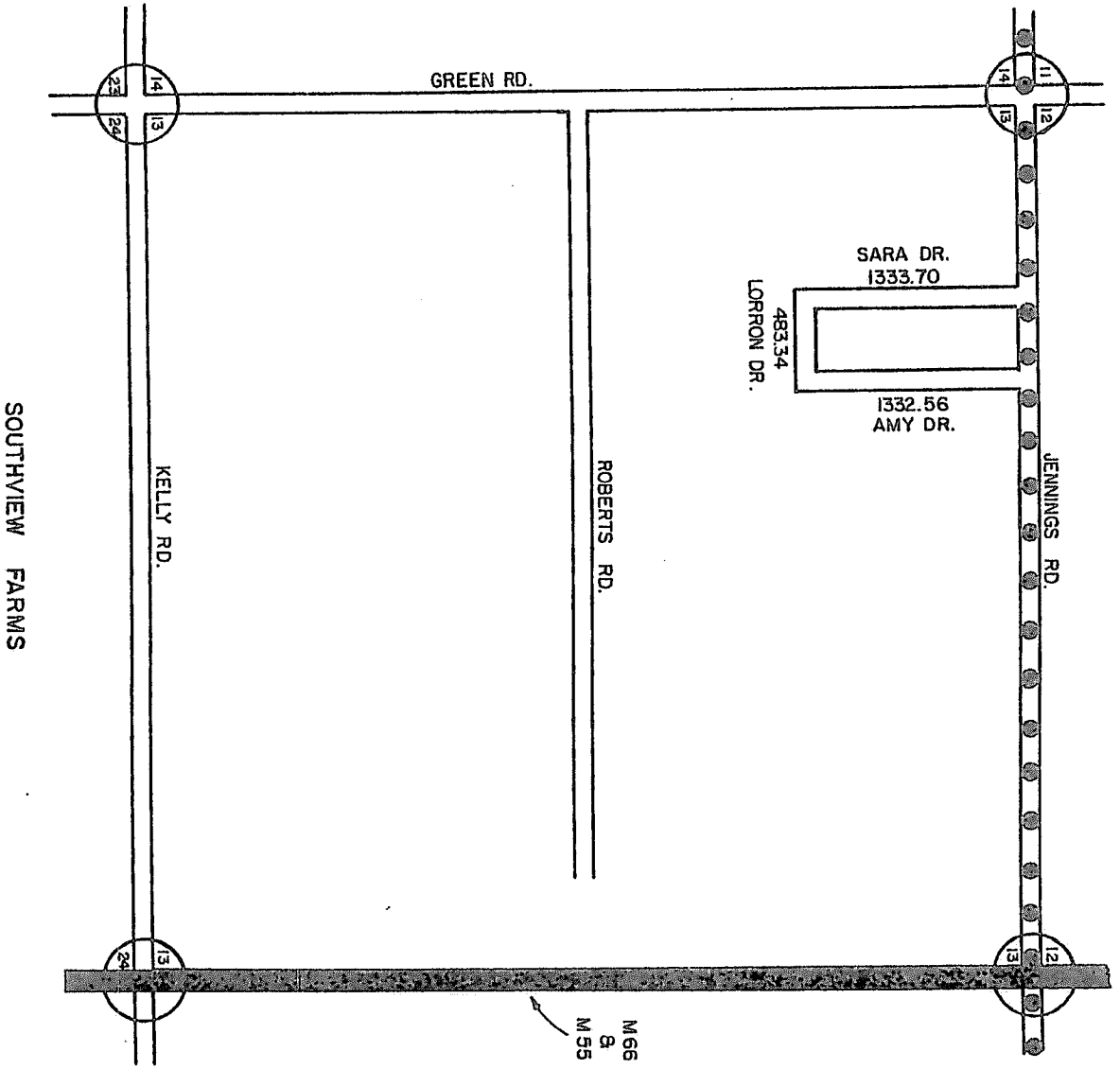
I HEREBY CERTIFY THAT THE ROADS SHOWN HEREON BY SYMBOL OR IN GRAY ARE LOCAL ROADS AND IN USE AND ARE UNDER THE JURISDICTION OF THE COUNTY ROAD COMMISSION.

CHAIRMAN _____ DATE _____



SCALE 0 400 1200 FEET
 One inch equals 400 feet

TOWNSHIP LAKE
 SECTION 34 T. 22 N. R. 8 W.
 COUNTY MISSAUIKEE

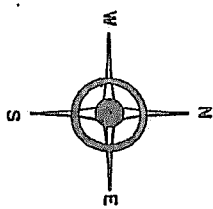


COUNTY LINE
 CORPORATE LIMITS
 STATE TRUNKLINE
 COUNTY PRIMARY
 COUNTY LOCAL
 ADJACENT COUNTY
 CITY OR VILLAGE
 STREET

TOTAL FEET 3150 EQUALS 60 MI.

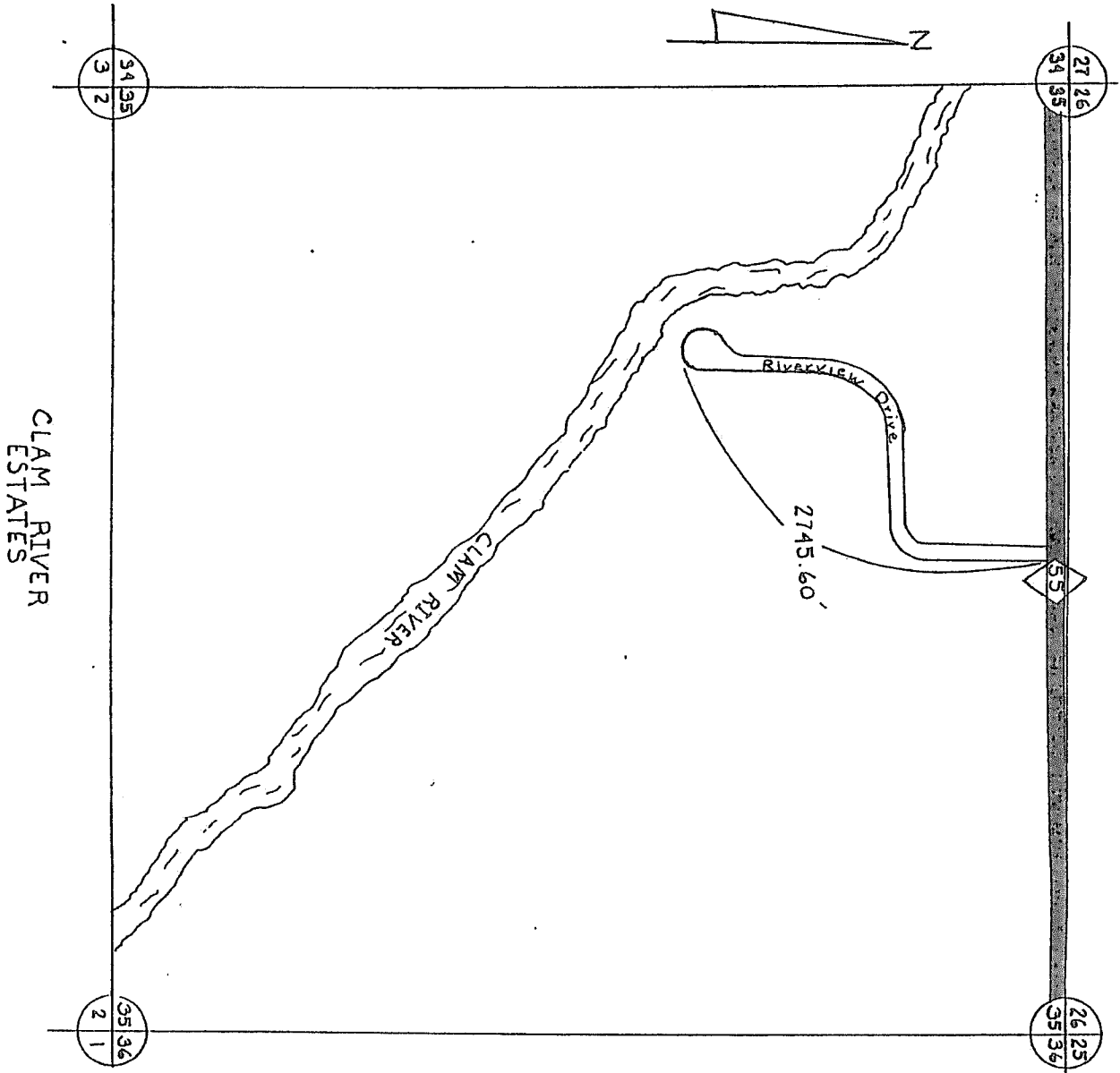
I HEREBY CERTIFY THAT THE ROADS SHOWN HEREON BY SYMBOL AS LOCAL ROADS ARE IN USE AND ARE UNDER THE JURISDICTION OF THE COUNTY ROAD COMMISSION.

CHAIRMAN _____ DATE _____



SCALE 0 600 1200 FT.
 ONE IN. EQUALS 600 FT.

TOWNSHIP LAKE
 SECTION 13 T21N R8W
 COUNTY MISSAUKEE



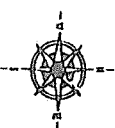
CLAM RIVER
ESTATES

STATE, TOWNSHIP,
COUNTY, PRELATE,
COUNTY LOCAL,
ADJACENT COUNTY,
CITY OR VILLAGE,
STREET

TOTAL FEET 2745.60, EQUALS .52 MILES

I HEREBY CERTIFY THAT THE ROADS
SHOWN HEREON BY THESE LINES
AS LOCAL ROADS ARE IN ACCORDANCE
WITH THE JURISDICTION OF THE COUNTY
ROAD COMMISSION.

CHAIRMAN DATE



SCALE 0 500 1000 FEET
One inch equals 500 feet

TOWNSHIP LAKE
SECTION 35 T. 22N R. 8W
COUNTY MISSOURI

5H



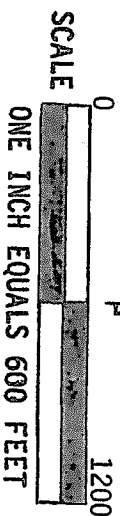
LEGEND

- COUNTY LINE
- CORPORATE LIMITS
- STATE TRUNKLINE
- COUNTY PRIMARY
- COUNTY LOCAL
- ADJACENT COUNTY
- CITY OR VILLAGE
- STREET

TOTAL FEET 2100 ft. EQUALS .40 MI.

I HEREBY CERTIFY THAT THE ROADS SHOWN HEREON BY SYMBOL AS LOCAL ROADS ARE IN USE AND UNDER THE JURISDICTION OF THE COUNTY ROAD COMMISSION.

CHAIRMAN _____ DATE _____



TOWNSHIP LAKE _____
 SECTION 27 _____
 COUNTY MISSAUKEE _____

RIVER WOODS ESTATES