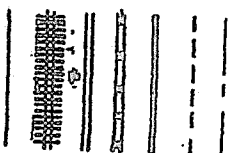


LEGEND

- COUNTY LINE
- CORPORATE LIMITS
- STATE TRUNKLINE
- COUNTY PRIMARY
- COUNTY LOCAL
- ADJACENT COUNTY
- CITY OR VILLAGE
- STREET



PRIMARY ROAD SYSTEM IS 7.16 MILES
 LOCAL ROAD SYSTEM IS 39.00 MILES

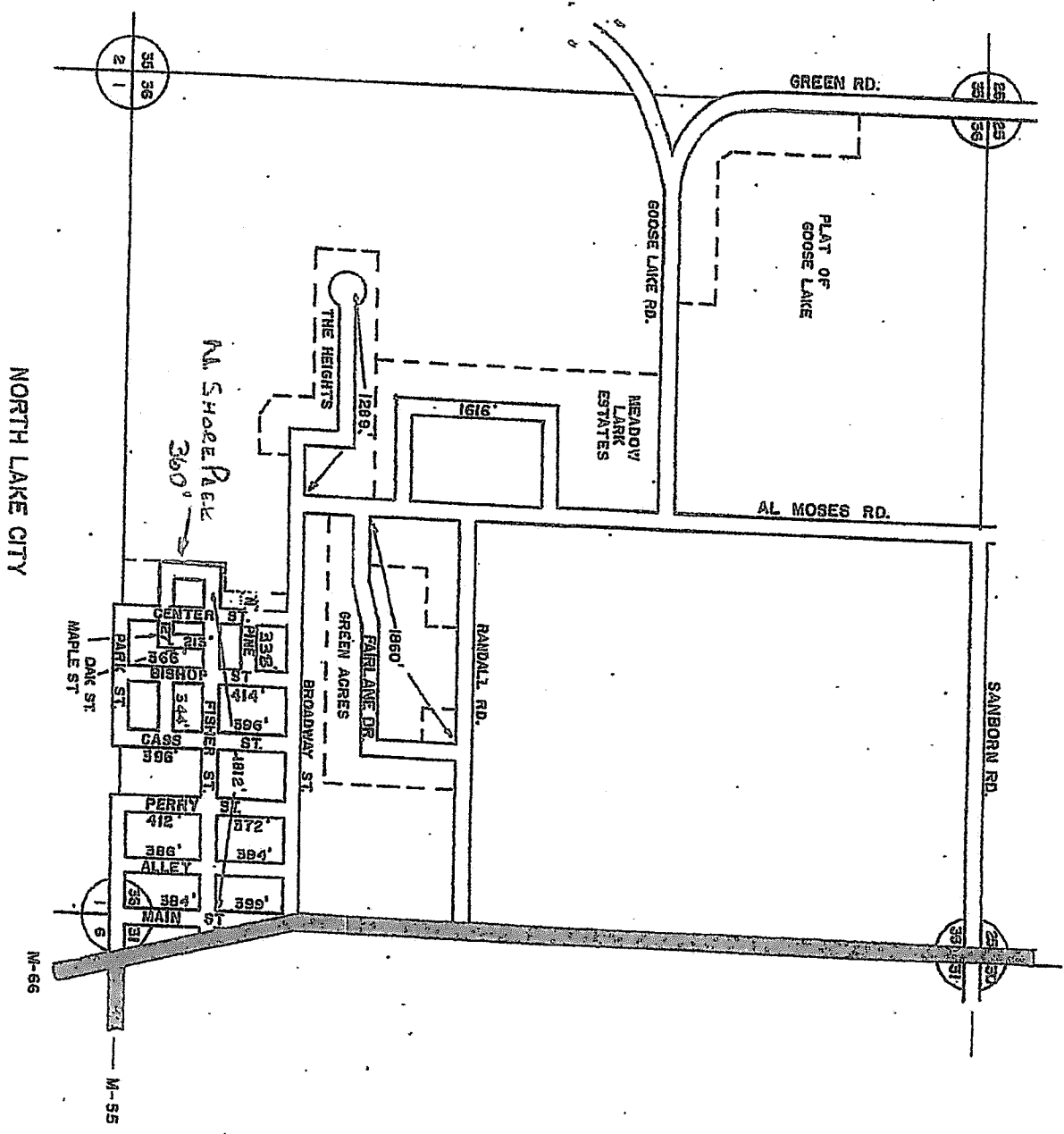
I HEREBY CERTIFY THAT THE
 ROADS SHOWN HEREON BY SYMBOL
 OR IN RED AS PRIMARY ROADS AND
 THOSE SHOWN HEREON BY SYMBOL
 OR IN GREEN AS LOCAL ARE IN USE
 AND ARE UNDER THE JURISDICTION
 OF THE COUNTY ROAD COMMISSION.

CHAIRMAN _____ DATE _____

SCALE 0 1/2 1 MILE
 ONE INCH EQUALS 3000 FT.

CALDWELL TWP
 T23N-R6W
 MISSAUKEE CO.

13	14	15	16
10	11	12	
5	6	7	8
1	2	3	4

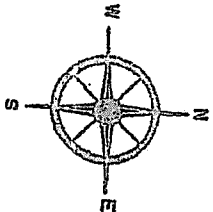


COUNTY LINE
 CORPORATE LIMITS
 STATE TRUNKLINE
 COUNTY PRIMARY
 COUNTY LOCAL
 ADJACENT COUNTY
 CITY OR VILLAGE
 STREET

TOTAL FEET 1,878 EQUALS 2.25 MI.

I HEREBY CERTIFY THAT THE ROADS SHOWN HEREON BY SYMBOL OR IN GREEN AS LOCAL ROADS ARE IN USE AND ARE UNDER THE JURISDICTION OF THE COUNTY ROAD COMMISSION.

CHAIRMAN _____ DATE _____



TOWNSHIP CALDWELL
 SECTION 36 T. 23N. R. 8W.
 COUNTY MISSOURI

NORTH LAKE CITY