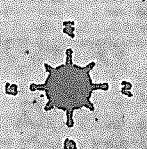


- COUNTY LINE \_\_\_\_\_
- CORPORATE LIMITS \_\_\_\_\_
- STATE TRUNK LINE \_\_\_\_\_
- COUNTY PRIMARY \_\_\_\_\_
- COUNTY LOCAL \_\_\_\_\_
- ADJACENT COUNTY \*\*\*\*\*
- CITY OR VILLAGE \_\_\_\_\_
- STREET \_\_\_\_\_

PRIMARY ROAD SYSTEM IS 16.79 MILES  
 LOCAL ROAD SYSTEM IS 25.65 MILES

I HEREBY CERTIFY THAT THE ROADS SHOWN HEREON BY SYMBOL OR IN RED AS PRIMARY ROADS AND THOSE SHOWN HEREON BY SYMBOL OR IN GREEN AS LOCAL ROADS ARE IN USE AND ARE UNDER THE JURISDICTION OF THE COUNTY ROAD COMMISSION.

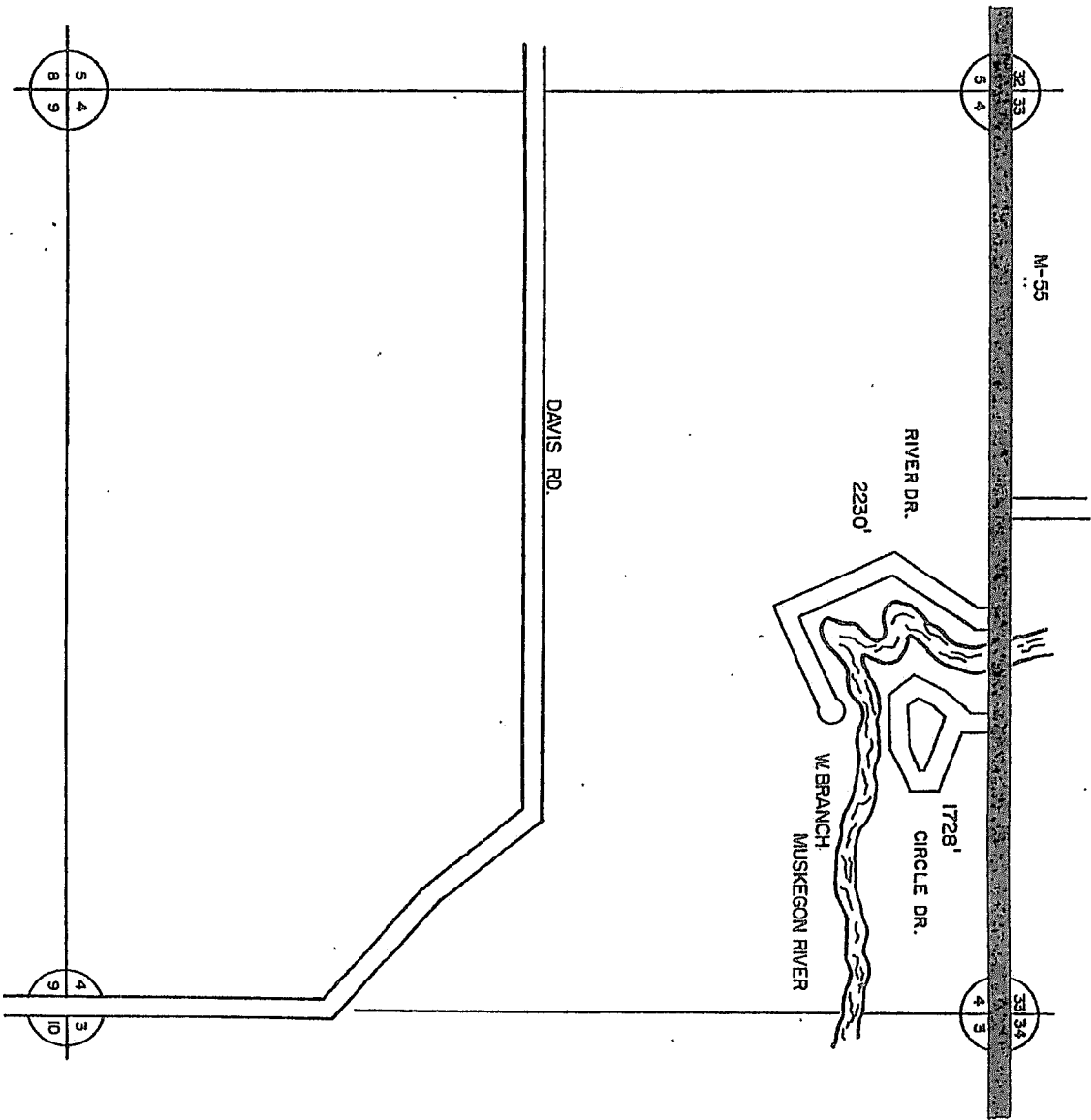
CHAIRMAN \_\_\_\_\_ DATE \_\_\_\_\_



SCALE 1" = 1/2 MILE  
 One Inch Equals 3000 Ft.

Prepared by  
**BUTTERFIELD TWP**  
 T22N - R5W

13	14	15	16
9	10	11	12
5	6	7	8
1	2	3	4



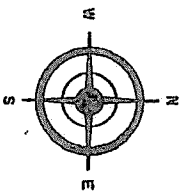
RIVER DRIVE SUBDIVISION

COUNTY LINE  
 CORPORATE LIMITS  
 STATE TRUNKLINE  
 COUNTY PRIMARY  
 COUNTY LOCAL  
 ADJACENT COUNTY  
 CITY OR VILLAGE  
 STREET

TOTAL FEET 3958 EQUALS 0.75 MILES

I HEREBY CERTIFY THAT THE ROADS SHOWN HEREON BY SYMBOL AS LOCAL ROADS ARE IN USE AND ARE UNDER THE JURISDICTION OF THE COUNTY ROAD COMMISSION.

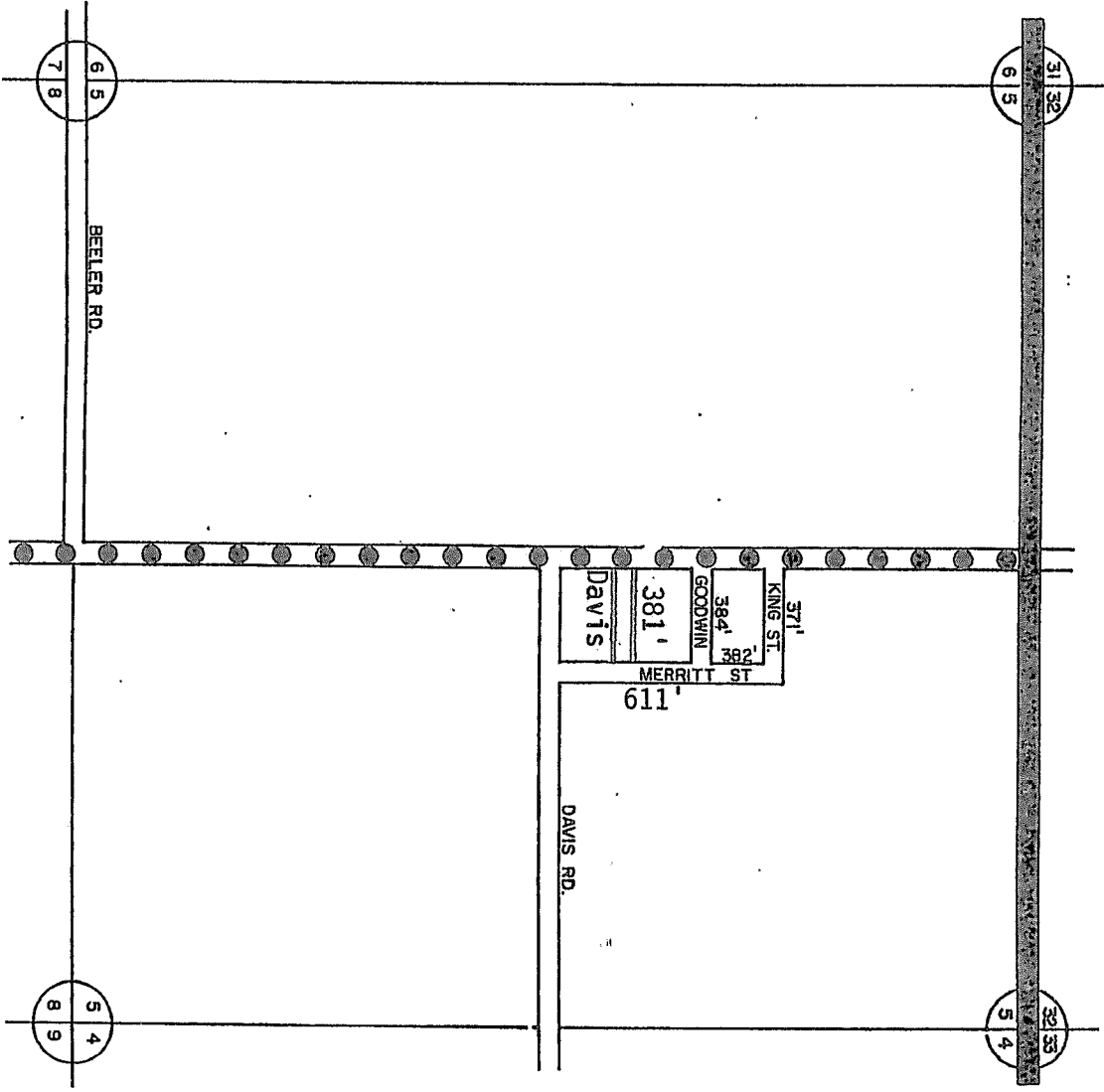
CHAIRMAN \_\_\_\_\_ DATE \_\_\_\_\_



SCALE  
 0 500 1200 FT.  
 ONE INCH EQUALS 500 FEET

TOWNSHIP BUTTERFIELD  
 SECTION 4 T22N R5W  
 COUNTY MISSAUKEE

VILLAGE OF MERRITT

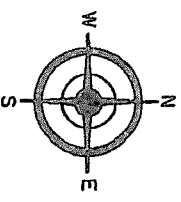


COUNTY LINE  
 CORPORATE LIMITS  
 STATE TRUNKLINE  
 COUNTY PRIMARY  
 COUNTY LOCAL  
 ADJACENT COUNTY  
 CITY OR VILLAGE  
 STREET

TOTAL FEET 2129' EQUALS 40 MI.

I HEREBY CERTIFY THAT THE ROADS SHOWN HEREON BY SYMBOL AS LOCAL ROADS ARE IN USE AND ARE UNDER THE JURISDICTION OF THE COUNTY ROAD COMMISSION.

CHAIRMAN \_\_\_\_\_ DATE \_\_\_\_\_



SCALE 0 600 1200 FT.

TOWNSHIP BUTTERFIELD  
 SECTION 5 T22N R3W  
 COUNTY MISSAUKEE